

[View this email in your browser](#)



## **Attend the 2026 Manufacturing Innovation Awards Dinner**



**WHEN:** May 14, 2026

**WHERE:** DoubleTree Hotel, Ontario CA

**TIME:** Doors open at 3:30 PM

Drinks and appetizers with dinner to follow.

For Sponsorship Opportunities, contact Sandra at [SSisco@mfgcouncilie.com](mailto:SSisco@mfgcouncilie.com)

[Learn More](#)

## Know a Manufacturer Doing Great Work?

### Nominate Them Now

Help them gain recognition, strengthen your partnership, and showcase innovation across the Inland Empire.

- Position yourself as a trusted partner
- Elevate your client, member, or employer partner
- Gain visibility with 100+ manufacturers and industry leaders - nominators are recognized at the event

One outstanding manufacturer in the Inland Empire will be honored in each of the following categories:

- Resource or Process Innovation
- Product Innovation
- Human Capital/ Talent Innovation
- Marketing Innovation



#### HOW TO NOMINATE

- For details and application form, visit [www.MFGCouncilie.com/innovation-awards](http://www.MFGCouncilie.com/innovation-awards).
- Manufacturers or their supporters (bankers, suppliers, community partners), acting on their behalf, may apply.
- Manufacturer must have an operational plant in the Inland Empire (defined as San Bernardino and Riverside Counties).
- Application Deadline is April 22, 2026.

# **Manufacturing Modernization Assessments for Manufacturers - At No Cost**



The MCIE has secured funding to provide comprehensive manufacturing assessments to just 30 Inland Empire companies at no cost. Our technical experts will evaluate your operations and create customized modernization roadmaps to help guide your future planning. This is typically a \$5,000 to \$10,000 service.

The program includes a short pre-meeting to verify if this will be a good fit and two 3-hour on-site assessments, by technical experts, including energy efficiency analysis, workforce development strategy and training resources.

#### **What You'll Get:**

- **Introductory Call:** Schedule a 15 or 30-minute introductory call. Open to all manufacturers. No cost. No obligation. No sales pitch.
- **On-Site Assessment:** Identify bottlenecks, waste, and automation opportunities in your plant at no cost.
- **Modernization Roadmap:** Improve productivity and throughput. Reduce operating and energy costs.

Contact us if you are a Riverside or San Bernardino County manufacturers with 10 or more employees. Contact Sandra Sisco at [ssisco@mfgcouncilie.com](mailto:ssisco@mfgcouncilie.com).

**FOR MORE INFORMATION ABOUT THIS OPPORTUNITY VISIT:**

<https://mfgcouncilie.com/automation>

## **San Bernardino Energy Grant support for Chaffey InTech's Pre-Apprenticeship Industrial Electric and Maintenance Program**



InTech's Pre-Apprenticeship Industrial Electrical & Mechanical (IEM) program is a short-term accelerated, 472-hour training program approved by the California Division of Apprenticeship Standards (DAS) that prepares individuals for entry-level positions as maintenance technicians in manufacturing, distribution, and other industries using

industrial machinery. Upon completion, trainees receive a Certificate of Completion, Cal/OSHA-10 General Industry certification, a California DAS certificate, and several industry-valued Amatrol certificates.

This program directly supports the growing need for energy-efficient employment by equipping students with skills critical to achieving energy reduction goals in industries increasingly prioritizing sustainability and operational efficiency. Training topics include safety, hand and power tools, print reading, oxyfuel cutting, fundamentals of industrial mechanical maintenance (including lubrication, mechanical power transmission, pumps and valves that reduce friction, minimize heat loss, and optimize equipment performance), basic industrial electricity AC and DC circuits, motors and motor controls, transformers, variable frequency drives (VFDs), sensors, electrical controls, NEC standards, basic hydraulics and pneumatics, and essential employability skills.

These technical competencies enable graduates to maintain and optimize equipment in large industrial settings, identify electrical inefficiencies, and maintain monitoring systems that track and optimize energy use throughout facilities. As manufacturing and logistics sectors adopt lean manufacturing principles, they require maintenance technicians who understand how mechanical and electrical systems impact overall energy performance. InTech's IEM graduates provide the foundational workforce needed to implement and sustain energy-efficient industry operations.

## **Women in Manufacturing: Leadership, Resilience, and the Future of the Inland Empire**

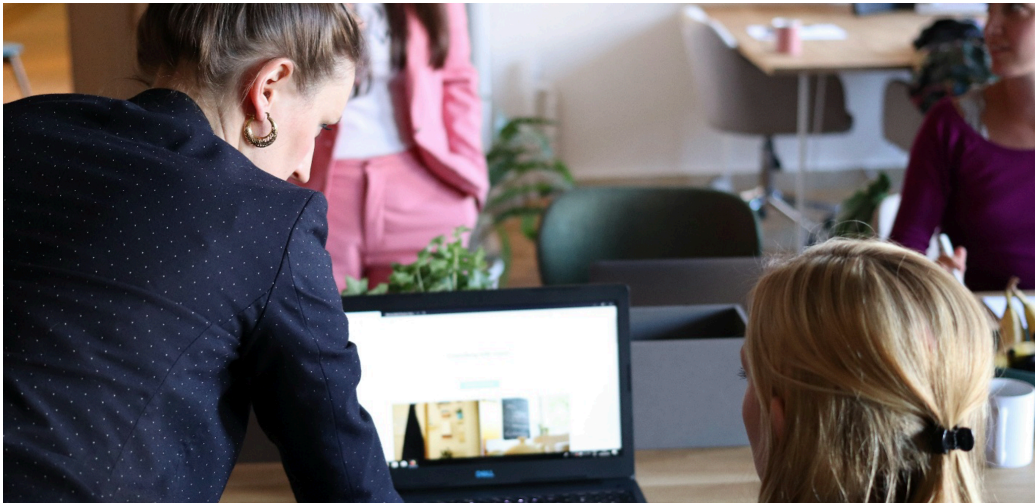


Manufacturing has always been about building—products, systems, and increasingly, the future of entire industries. In the Inland Empire, women are playing a central role in that effort, leading companies, solving complex challenges, and shaping the next generation of the workforce.

Two such leaders—Kusum Kavia of CAI and Kimberly Clarke of Walker Manufacturing Group—offer a window into how modern manufacturing is evolving, and why leadership in this space increasingly demands both technical fluency and long-term strategic thinking.

[Read More](#)

## **Women Are Powerhouse Businesspeople: MBA Insights for Manufacturers**



Manufacturing leadership is evolving—and the data is catching up. Across industries, research from organizations like McKinsey, Harvard Business Review, and Catalyst shows that women leaders consistently excel in areas that directly impact performance. These aren't abstract traits—they're operational advantages.

[Read More](#)

## **MCIE Brings Students Inside Advanced Manufacturing with Brenner-Fiedler Tour**



The Manufacturers' Council of the Inland Empire (MCIE) is continuing to connect education with industry through hands-on manufacturing tours designed to inspire the next generation of skilled workers.

In April, the MCIE—alongside Norco College and Moreno Valley College—will host a student tour at Brenner-Fiedler's Riverside facility, giving participants a rare behind-

the-scenes look at modern automation and engineering in action.

[Read More](#)

## 🚀 Ready to Launch at MCIE's 2026 Charity Golf Event? 🚀

One of the most talked-about highlights on the course is back... **the Golf Cannon!**

At the **3rd Annual Manufacturing Charity Golf Event**, players will have the chance to step up, take aim, and launch their shot down the fairway with the Golf Cannon — adding energy, excitement, and a little friendly competition to an already incredible day on the green.



*This fan-favorite activity isn't just fun — it's part of a bigger mission.*

**When:** June 1, 2026

**Shotgun Start:** 8:30 AM

**Where:** Bear Valley Country Club, Victorville, CA

🔗 Register here: <https://mfgcouncilie.com/events>

### **Why play?**

Every swing supports the future of our industry.

A portion of each registration directly funds student scholarships for careers in manufacturing through:

- Technical trade schools
- Apprenticeships
- Career pathway programs

This is more than a great day of golf — it's an opportunity to invest in the workforce that keeps manufacturing strong. Bring your team together, enjoy unforgettable on-course experiences like the Golf Cannon, and help fuel the next generation of talent.

Lock in your foursome and sponsorship package now.

**Secure your spot. Support students. Be part of something bigger than the game.**

For questions, contact Sarah Johnson at [sjohnson@mfgcouncilie.com](mailto:sjohnson@mfgcouncilie.com)

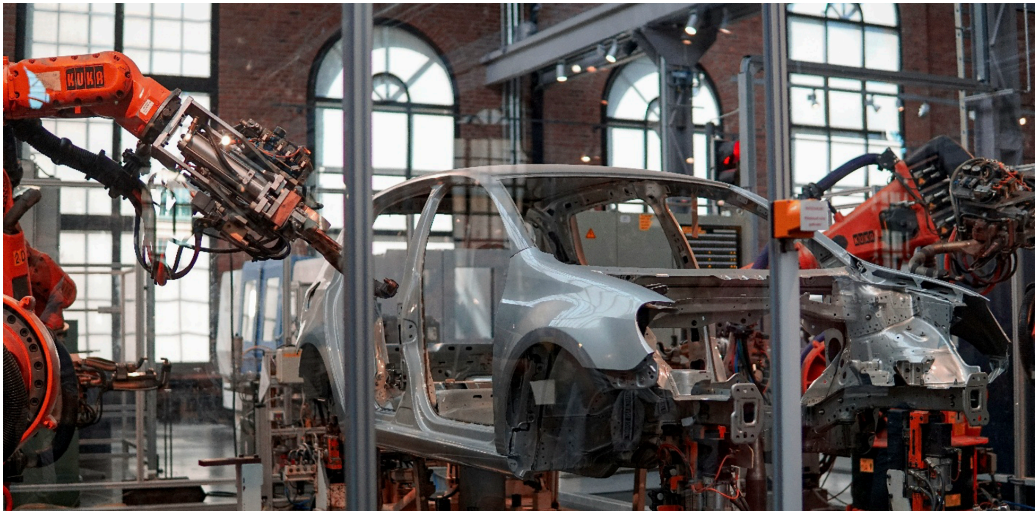
### Sponsors:



**WATCH OUR EVENTS PAGE FOR UPCOMING TOURS** [Events – MCIE](#)

**LET US TOUR YOUR PLANT!** Contact Debbie at [dsmith@mfgcouncilie.com](mailto:dsmith@mfgcouncilie.com)

## What Do Students Actually Learn in Industrial Automation—and Why It Matters on Your Shop Floor



Manufacturers hear a lot about “automation training.” But what does that actually mean in practice—and what does a graduate of these programs bring to your operation?

The Industrial Automation programs at Moreno Valley College and Norco College focus on one thing: building employees who can understand, troubleshoot, and support modern manufacturing systems from day one.

[Read More](#)



## **Board Spotlight: Kusum Kavia, CEO of CAI**



For more than three decades, Kusum Kavia has helped shape the Inland Empire's reputation as a center of industrial innovation.

Kavia is the CEO of CAI, a Corona-based engineering and manufacturing company that designs and builds advanced on-site power generation systems. What began 35 years ago as an air pollution compliance consulting firm has evolved into a manufacturing operation delivering modular energy infrastructure to customers around the world.

[Read More](#)

## Donate Now for Scholarships

The Manufacturers' Council, a 501(c)(3) nonprofit, is asking for your support to help fund scholarships for students pursuing industry certifications in manufacturing and technical trades. Your donation equips local talent with the skills employers urgently need, strengthens the regional workforce, and creates life-changing career opportunities.

A contribution today delivers immediate impact—helping students succeed and ensuring a stronger future for Inland Empire manufacturing.

Donate Now

# Ready to make a difference?

## Join the Manufacturers' Council – Be Part of the Movement Shaping the Future of Manufacturing in the Inland Empire

Become a Member Today at <https://mfgcouncilie.com/membership>

Since 2005, the Manufacturers' Council of the Inland Empire (MCIE) has supported a thriving manufacturing economy by securing over \$50 million in workforce training, production innovation, and industry growth.

With nearly 95,000 manufacturing jobs in our region and continued growth projected in 2026, MCIE is committed to building a skilled, sustainable workforce and shifting public perception about the importance of manufacturing in our community.

As a 501(c)(3) nonprofit, MCIE connects manufacturers with education, workforce programs, and regional resources, while promoting career pathways for the next generation of talent. Now is the time to get involved. Become a member and help drive real impact.

[\*\*READ MORE\*\*](#)

## Sponsorship Opportunities

As you begin planning your 2026 marketing and community engagement budgets, we invite you to consider partnering with us as a **Yearly Sponsor** for our upcoming events and initiatives for the year.

The MCIE is proud to host a variety of impactful events that bring together business leaders, community members, and changemakers across the region. Sponsorship provides a unique opportunity to:

- Build brand awareness
- Connect with targeted audiences
- Align with meaningful causes and business development efforts
- Gain year-round visibility across digital and in-person platforms

**Upcoming 2026 Opportunities Include: Visit the MCIE events page here for all events.**

[\*\*Events – MCIE\*\*](#)

Included are sponsorship packages to fit a range of goals and budgets—including early visibility opportunities for companies who commit now.

For questions and to move forward with sponsorship, please contact Sarah Johnson, Events Operations Director at [sjohnson@mfgcouncilie.com](mailto:sjohnson@mfgcouncilie.com) | (253) 880-2333

Thank you for your continued support of our mission—we look forward to collaborating with you in the year ahead.

## Economy and Regulations:

- (Mar 6) – In February, the US economy shed 92,000 jobs. The unemployment rate rose to 4.4% from 4.3% the month prior. Job gains occurred in Construction, Healthcare, Social Assistance. Job losses occurred in Health, reflecting strike activity, and employment in information and federal government also trended downward. (Bureau of Labor Statistics)
- (Feb 18) – The Federal Open Markets Committee will meet again in March. At their last meeting on January 28 they agreed that inflation's approach to 2% normal levels could be slow and uneven, leaving the Federal Overnight Rate in the targeted range to between 3.5% and 3.75%. CPI inflation remained flat at 2.4% in February according to Bureau of Labor Statistics. (Federal Reserve, Bureau of Labor Statistics, Financial Times)

---

Have a profitable April!

Molly

Molly Burgess

Executive Director

[mburgess@mfgcouncilie.com](mailto:mburgess@mfgcouncilie.com)

Cell: 909.965.6089

Office: 909.474.7120

[Website](#) | [Social Media & News](#)



*Copyright (C) 2026 Manufacturers' Council of the Inland Empire. All rights reserved.*

Our mailing address is:

Want to change how you receive these emails?

You can [update your preferences](#) or [unsubscribe](#)